

SPEC SHEET + MEASUREMENTS



Russell Outdoors™ Basin Jacket. RU550

Product photo



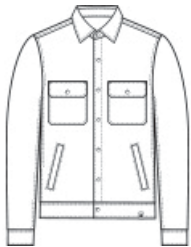
With its heavy wool-like feel, this jacket's the perfect outer layer. Reminiscent of aviator style jackets, it's ready to throw on over any Russell Outdoors™ tee—making it ideal for a casual office vibe, corporate retreat or favorite hike.

- 12-ounce, 100% polyester
- Folded collar
- Full snap front with branded metal snaps
- 2 chest pockets with branded metal snaps
- Side pockets
- Banded fitted hem
- Exterior embossed faux leather tab at hem

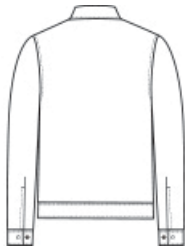
CARE INSTRUCTIONS

Machine Wash Warm With Like Colors. Only Non-Chlorine Bleach When Needed. Tumble Dry Low. Do Not Iron.

Sketches



front



back

SPEC SHEET + MEASUREMENTS



Russell Outdoors™ Basin Jacket. RU550

PRODUCT MEASUREMENTS

	XS	S	M	L	XL	2XL	3XL	4XL
Body Length at Back	25 1/2	26 1/2	27 1/2	28 1/2	29 1/2	30 1/2	31	31 1/2
Chest	20	21 1/2	23	24 1/2	26	27 1/2	29 1/2	31 1/2
Sleeve Length from Center Back	34 3/4	35 1/2	36 1/4	37	37 3/4	38 1/2	39 1/4	40

Body Length at Back: Measured from high point shoulder to finished hem at back.

Chest: Measured across the chest one inch below armhole when laid flat.

Sleeve Length from Center Back: Measure from Center Back neck to shoulder point to sleeve hem.

SIZE CHARTS

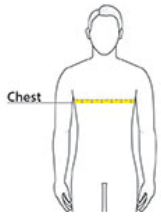
	XS	S	M	L	XL	2XL	3XL	4XL
Chest	32-34	35-37	38-40	41-43	44-46	47-49	50-53	54-57

SPEC SHEET + MEASUREMENTS



Russell Outdoors™ Basin Jacket. RU550

HOW TO MEASURE



CHEST

Measure under the arm and around the fullest part of the chest with arms down, keeping tape horizontal.

COLORS



Deep Black
Plaid



Graphite
Heather



Red Plaid